



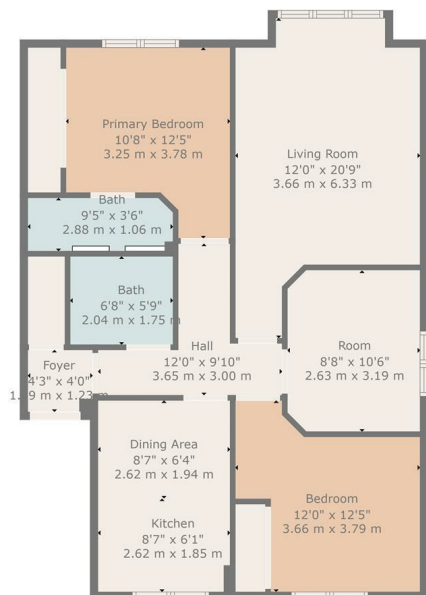
HEMMINGS HOMES

OFFERS OVER

£155,000

Hamilton Road

Motherwell, ML1 3DG



TOTAL: 861 sq. ft, 80 m²
FLOOR 1: 861 sq. ft, 80 m²
WALLS: 64 sq. ft, 6 m²

Floor Plan Created by Cubicase App. Measurements Deemed Highly Reliable But Not Guaranteed.



Energy Efficiency Rating

	Current	Potential
Very energy efficient - lower running costs		
(92 plus) A		
(81-91) B		
(69-80) C	79	79
(55-68) D		
(39-54) E		
(21-38) F		
(1-20) G		
Not energy efficient - higher running costs		
Scotland	EU Directive 2002/91/EC	



Agents Note: Whilst every care has been taken to prepare these particulars, they are for guidance purposes only. All measurements are approximate and are for general guidance purposes only and whilst every care has been taken to ensure their accuracy, they should not be relied upon and potential buyers/tenants are advised to recheck the measurements



OFFICE ADDRESS

376 Brandon Street
 Motherwell
 North Lanarkshire
 ML1 1XA

OFFICE DETAILS

01698 263413
enquiries@hemmingshomes.co.uk
hemmingshomes.co.uk